



Nurturing care for early childhood development:

Creating an enabling environment

Dr. Makeba Shiroya

WHO Kenya

[#NurturingCare](#) [@NurturingCare](#)

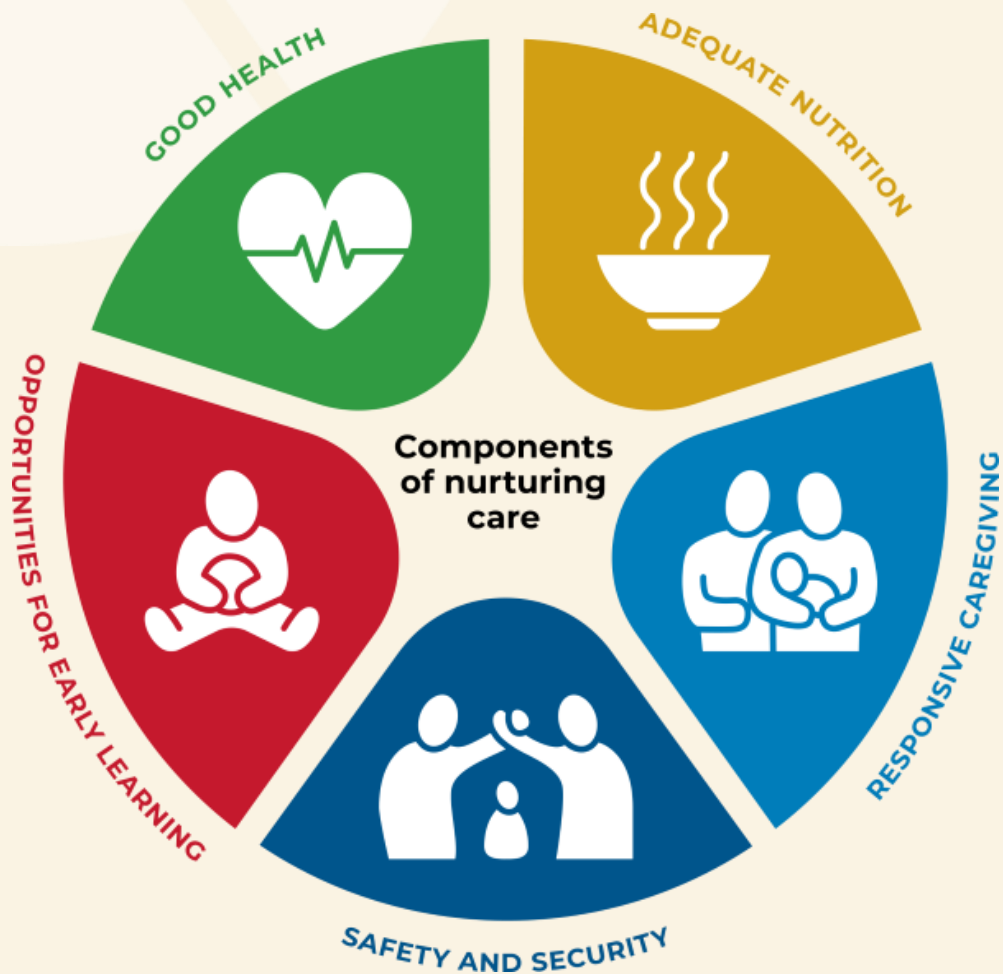
Photo credit:© Aga Khan Development Network / Christopher Wilton-Steer



NURTURING CARE
FOR EARLY CHILDHOOD DEVELOPMENT

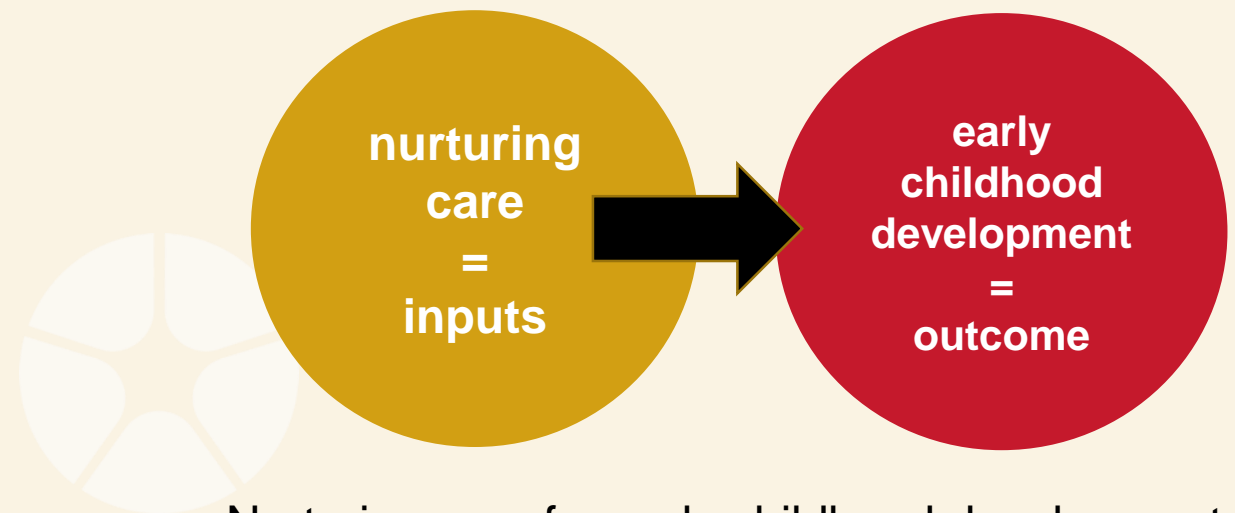


Nurturing care



To reach their full potential, children need the five inter-related and indivisible components of nurturing care: **good health**, **adequate nutrition**, **safety and security**, **opportunities for early learning**, and **responsive caregiving**.

In the first years of life, parents, intimate family members and caregivers are the closest to the young child and thus the best providers of nurturing care.



Nurturing care for early childhood development

Two interrelated action areas

What the child's brain and body expects and needs



Enabling environments for nurturing care



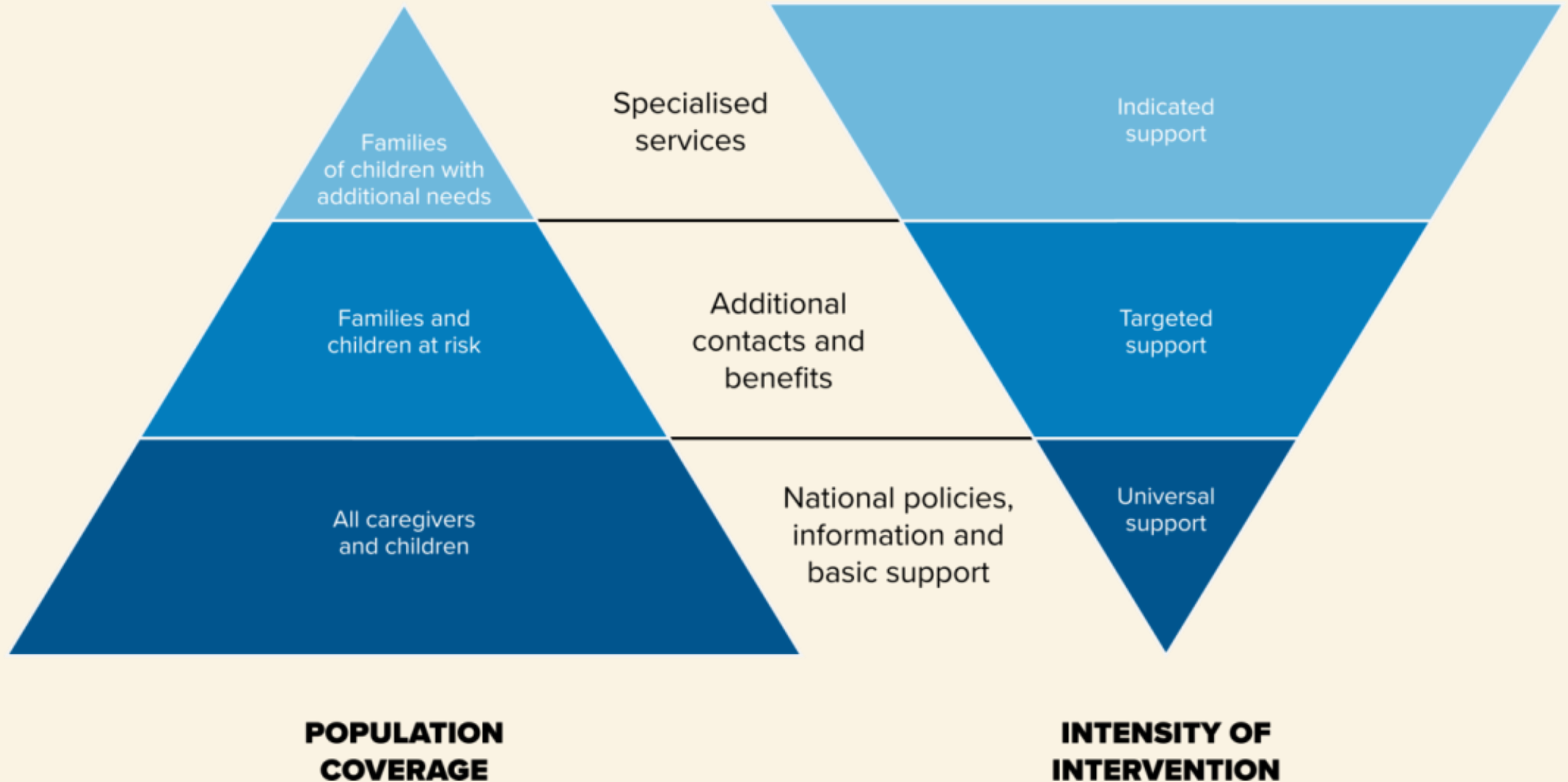
Enabling policies

to provide caregivers with time and resources

- Maternity protection
- Parental leave
- Protection from marketing of breastmilk substitutes
- Breastfeeding breaks at work
- Clean air
- Smoke-free environments
- National minimum wage
- Health insurance
- Child and family social protection
- Affordable childcare
- Free pre-primary education
- Places for play and recreation
- Cash transfers



A universal progressive approach for meeting all children's needs



Existing opportunities to support nurturing care

Neonatal intensive care

Well-baby clinic
Immunization

Paediatric inpatient care

Postnatal consultation

Sick child consultation

Maternity care

Care for chronic illness

Antenatal consultation



Nutrition rehabilitation

Waiting rooms: audio-visual materials, health talks, toys

Mother groups, home visits in the community

**IMPROVING
EARLY
CHILDHOOD
DEVELOPMENT:**
WHO Guideline



WHO, 2020

1 RESPONSIVE CAREGIVING

All infants and children should receive responsive care during the first 3 years of life; parents and other caregivers should be supported to provide responsive care.

Strength of recommendation: Strong
Quality of evidence: Moderate (for responsive care)



2 PROMOTE EARLY LEARNING

All infants and children should have early learning activities with their parents and other caregivers during the first 3 years of life; parents and other caregivers should be supported to engage in early learning with their infants and children.

Strength of recommendation: Strong
Quality of evidence: Moderate (for early learning)



3 INTEGRATE CAREGIVING AND NUTRITION INTERVENTIONS

Support for responsive care and early learning should be included as part of interventions for optimal nutrition of infants and young children.

Strength of recommendation: Strong
Quality of evidence: Moderate



4 SUPPORT MATERNAL MENTAL HEALTH

Psychosocial interventions to support maternal mental health should be integrated into early childhood health and development services.

Strength of recommendation: Strong
Quality of evidence: Moderate



NURTURING CARE PRACTICE GUIDE

Part 1 – Nurturing care: another look

Rationale for strengthening support for responsive caregiving, early learning, safety and security, and caregiver well-being in health and nutrition services

Part 2 – What can managers do?

Role of managers to reduce barriers, build skills of providers, identify resources for additional support

Part 3 – What can service providers do?

Practical examples of what providers can do in existing services to better support caregivers and their children.



Forthcoming in the next month!



SAFETY AND SECURITY



OPPORTUNITIES FOR EARLY LEARNING



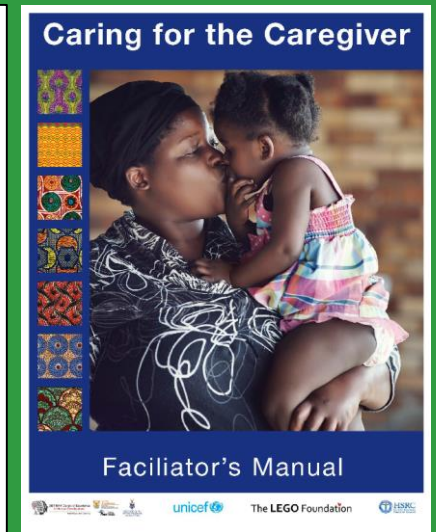
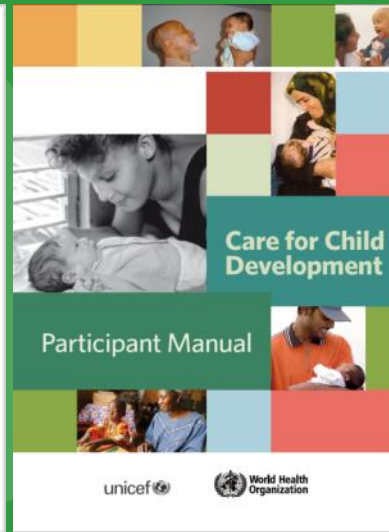
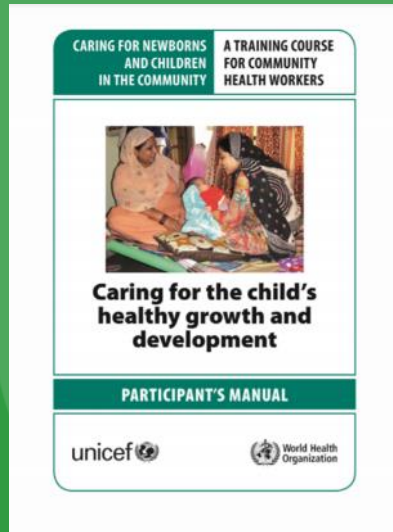
RESPONSIVE CAREGIVING



CAREGIVER WELL-BEING

Tools

<https://nurturing-care.org/tag/training-materials>



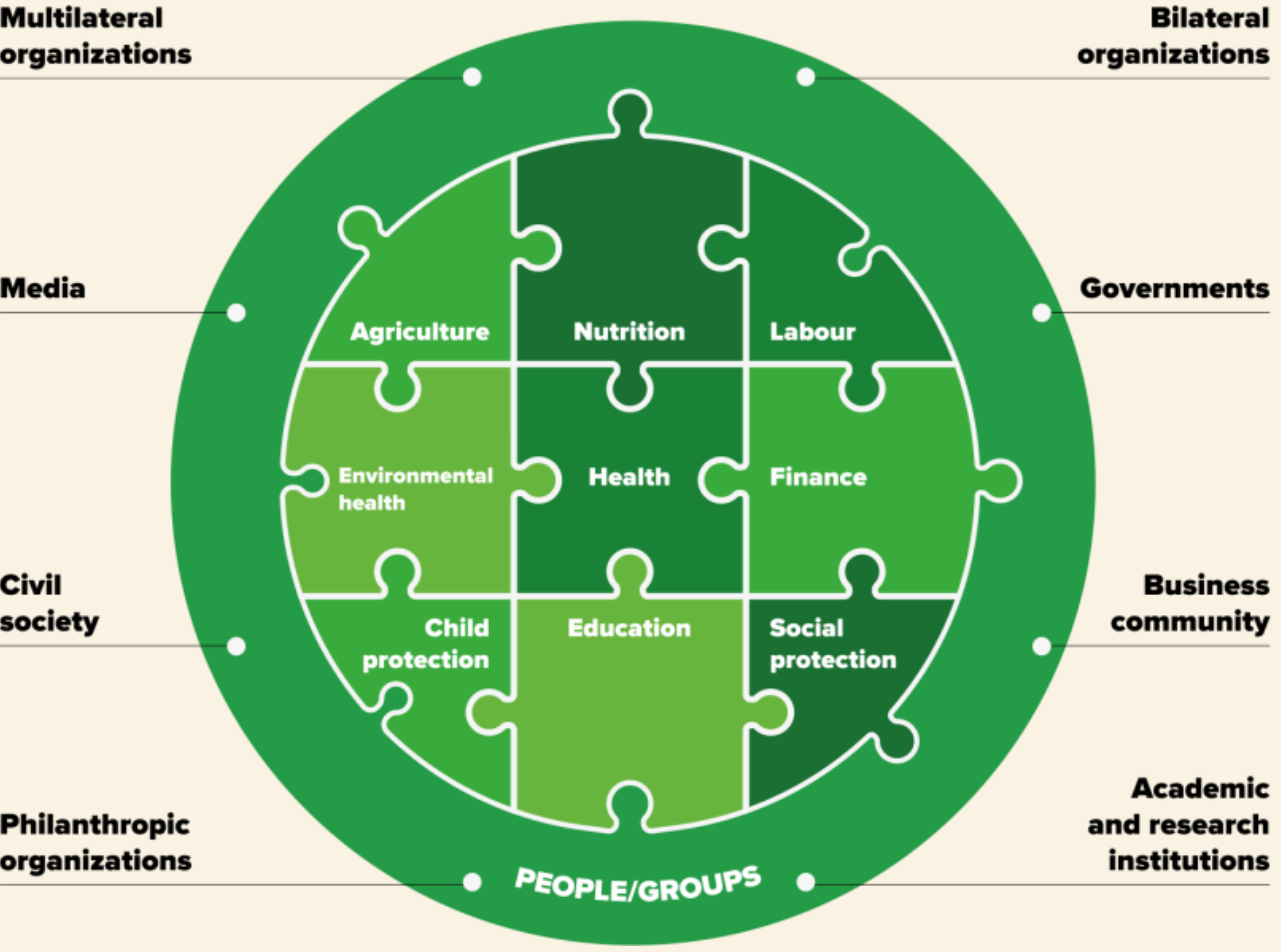
And so much more!

- Reach up and Learn
- Parenting for lifelong health – tip sheets,
- Videos



NURTURING CARE
FOR EARLY CHILDHOOD DEVELOPMENT

Building on what exists



Remember



Strengthen



Add

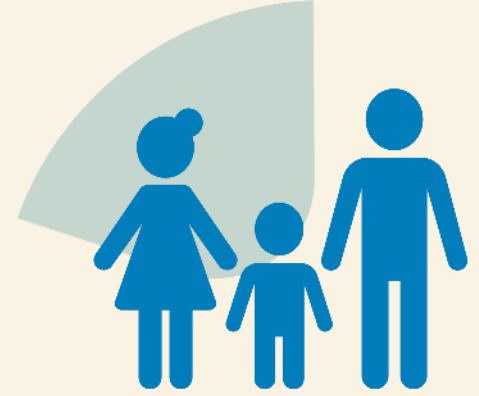
The five strategic actions

1



**LEAD
AND INVEST**

2



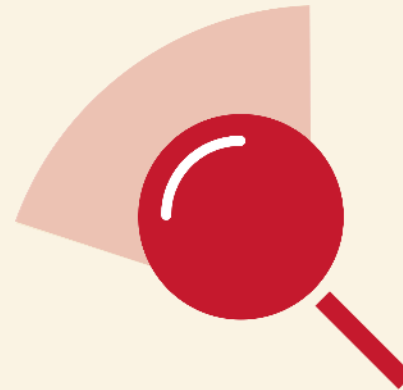
**FOCUS ON FAMILIES AND
THEIR COMMUNITIES**

3



**STRENGTHEN
SERVICES**

4



**MONITOR
PROGRESS**

5



SCALE UP AND INNOVATE

Operationalizing NC for ECD

<p>Lead and invest</p>	<ul style="list-style-type: none"> – Governance and coordination – Planning – Financing 		
<p>Focus on families and their communities</p>	<ul style="list-style-type: none"> – Community engagement – Social accountability – Use of mass media 		
<p>Strengthen services</p>	<ul style="list-style-type: none"> – System strengthening – Building workforce capacities – Strengthening services 		
<p>Monitor progress</p>	<ul style="list-style-type: none"> – Monitoring individual children – Monitoring programme implementation – Measuring coverage at population-level 		
<p>Scale up and innovate</p>	<ul style="list-style-type: none"> – Towards scale – Private sector – Digital solutions 		

Nurturing care handbook: <https://nurturing-care.org/handbook>

Thank you



NURTURING CARE
FOR EARLY CHILDHOOD DEVELOPMENT

For more information:

nurturing-care.org
ecdan.org

Join the conversation:

[#NurturingCare](https://twitter.com/NurturingCare)
[@NurturingCare](https://twitter.com/NurturingCare)

